



16 Washington Drive Stony Rise TAS

3  2  1 

Immaculately presented inside and out with nothing to do, this stylish three-bedroom home is certain to impress.

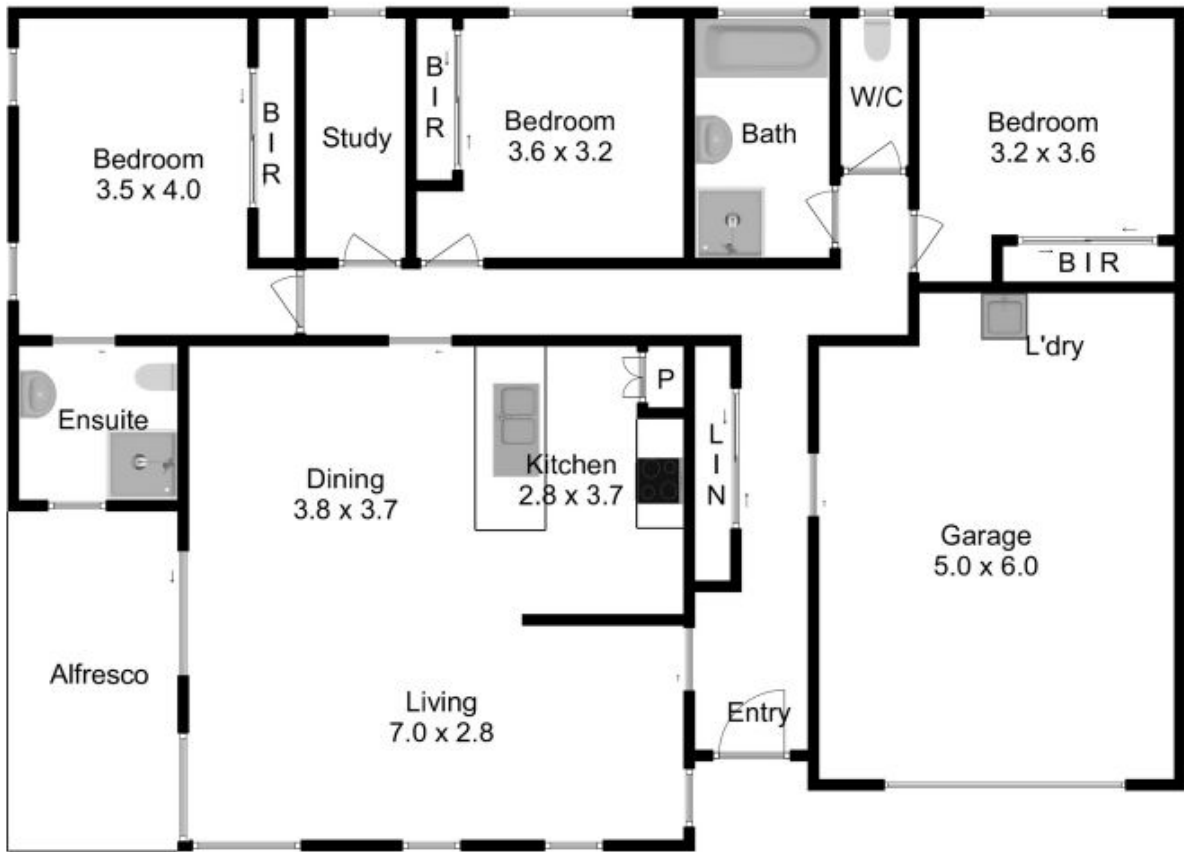
Step into the light filled, open plan living, dining and kitchen and delight in this beautiful space. In the living room a north facing corner window invites light in and provides the perfect spot to curl up with a book. With quality appliances, optimal storage and a breakfast bar for a casual dining option the kitchen will impress. The central dining space leads outside to an undercover alfresco area and courtyard beyond which is a great extension to living and ideal for entertaining.

A light and bright ensuite combined with large built-in wardrobe compliment the master suite, while there are two other bedrooms that are both double in size with built-in wardrobes. With a built-in desk and shelving, the study is a

Price : \$625,000
Land Size : 886 sqm
View : <https://www.halliwell.net.au/sale/tas/burnie-devonport-nw-tas/stony-rise/residential/house/6792047>



Leigh Murphy
03 6420 8000



Produced by Open2view.com for
 Fixtures and fittings are for display purposes only.
 Not to scale. This floorplan is a sketch, and all dimensions stated are approximate.
 All room measurements are in metres.
 Approx floor area sq m.